

# RGB Tunable - #2030



24W/M



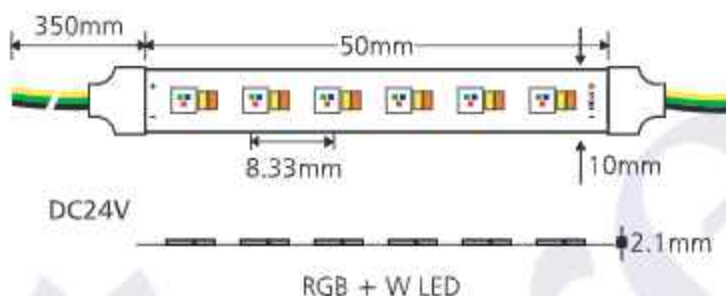
1655lm/m +  
(2610lm/m to 2685lm/m)



RGB + Tunable  
(2700K to 4000K)

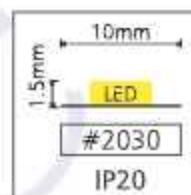


120°



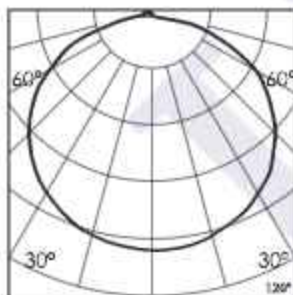
Max Length  
5000MM

Min Cut  
50MM



## Photometric Data

Light source	LED - Low Power	Light output ratio	86%
Power (W)	24W/M	Color rendering index (Ra)	>90
Delivered lumens	1655lm/m + (2610lm/m to 2685lm/m)	Color rendering index (R9)	>50
Source lumens	1920lm/m + (3024lm/m to 3168lm/m)	Binning MacAdam	<3 SDCM
Colour temperature (K)	RGB + Tunable (2700K to 4000K)	LED life	L90 B10 Tj75°C
Luminaire efficacy	68.95lm/W + (108lm/W to 111lm/W)	Operating temperature	-20°C to +50°C
Beam angle	120°	Light distribution	Direct - Symmetric

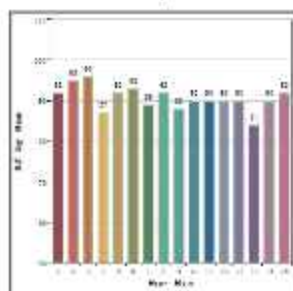


## Technical Data

Mounting detail	Profile Mounted	Safety class	III
Fixing detail	Adhesive Tape	Insulation class	III
Orientation	Fixed	Driver Input Voltage	AC230V
IP rating	IP20	Strip Light voltage	DC24V
Glow w i e test	850°	Driver	CV - Remote

## Photometric Graphs

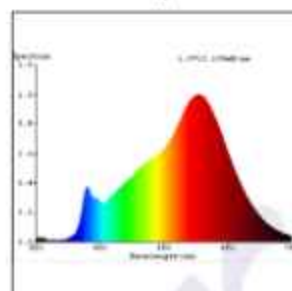
Hue Bin vs Rf Graph



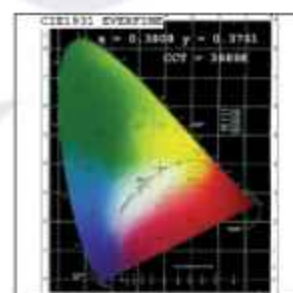
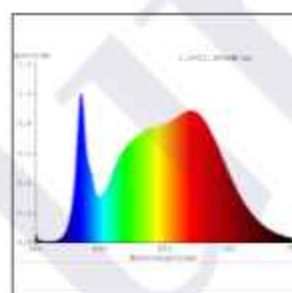
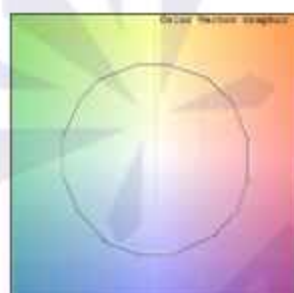
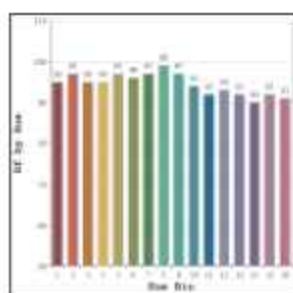
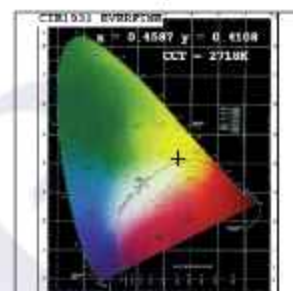
Color Vector Graph



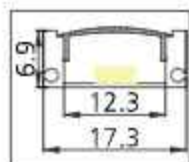
Spectrum vs Wavelength Graph



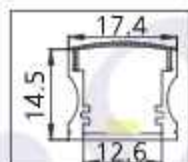
CIE Chromaticity Graph



## Profile for Svelte RGB Tunable



ACLAP02



ACLAP04

## Dimming Options



Remote DMX Decoder

The DMX Decoder requires a 24V CV Driver

L'azure constantly strives to improve our products using the latest technological advancements in the industry.  
Due to which the data mentioned in the data sheet is subject to change without prior notice.