

Cylinder Glow S - #1122



3W (Up)
9W (Down)



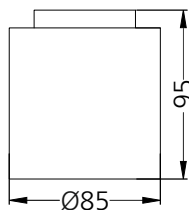
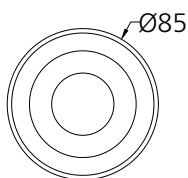
232lm (Up)
843lm (Down)



4000K

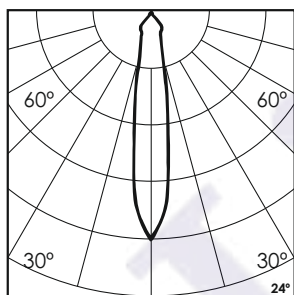


Diffused (UP)
24° (Down)



Photometric Data

Light source (Up+Down)	High Power+Array	Light output ratio (Up+Down)	55%+72%
Power (W) (Up+Down)	3W+9W	Color rendering index (Ra) (Up+Down)	>92+>95
Delivered lumens (Up+Down)	232lm+843lm	Color rendering index (R9) (Up+Down)	>50+>85
Source lumens (Up+Down)	417lm+1161lm	Binning MacAdam	<2 SDCM
Colour temperature (K)	4000K	LED life	L90 B10 Tj75°C
Luminaire efficacy (Up+Down)	77lm/W+93lm/W	UGR	<16
Beam angle	Diffused (Up) 24° (Down)	Operating temperature	-20°C to +50°C
		Light distribution	Direct - Symmetric

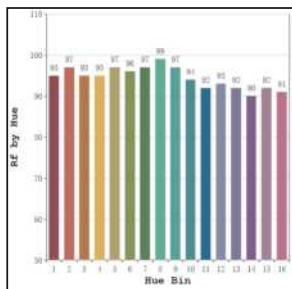


Technical Data

Mounting detail	Ceiling - Surface	Product weight	352gms
Fixing detail	Mounting with Screw	Safety class	III
Orientation	Fixed	Insulation class	III
IP rating	IP44	LED current (mA)	300mA
Glow wire test	850°	Voltage	AC230V
Trim material	NA	Forward voltage	DC36V
Heatsink material	Diecast alm.	Driver	CC - In-built

Photometric Graphs

Hue Bin vs Rf Graph



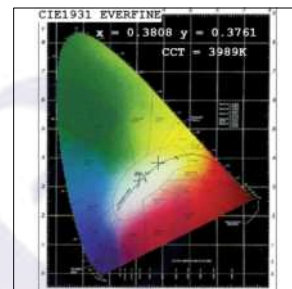
Color Vector Graph



Spectrum vs Wavelength Graph



CIE Chromaticity Graph



Finish Options

Body Finish

- ☐ Matt White
- ☒ Custom RAL Color

Reflector Finish

- ☐ Specular
- ☒ Pearl Black

Dimming Options



Constant Current Driver
12w (3w+9w) 300mA
Non Dimmable - In-built



Constant Current Driver
12w (3w+9w) 300mA
Triac Dimmable - Remote



Constant Current Driver
12w (3w+9w) 300mA
Analog 0-10V / 1-10V Dimmable - Remote



Constant Current Driver
12w (3w+9w) 300mA
Dali Dimmable - Remote