

Trax Cove Uplight L - #2076



6W/M



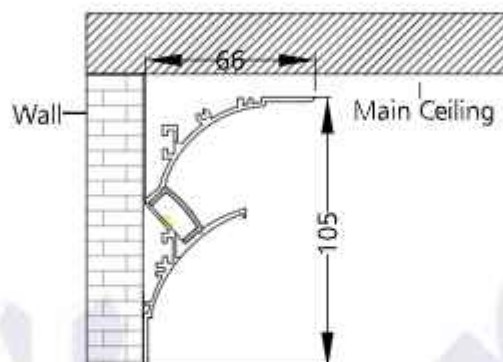
524lm/m



2700K



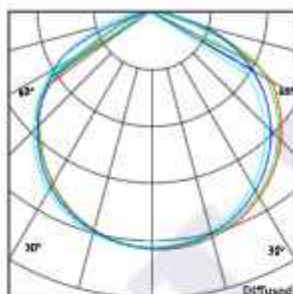
Diffused



Trimless Mounting

Photometric Data*

Light source	LED - Low Power	Light output ratio	69%
Power (W)	6W/M	Color rendering index (Ra)	>92
Delivered lumens	524lm/m	Color rendering index (R9)	>50
Source lumens	756lm/m	Binning MacAdam	<3 SDCM
Colour temperature (K)	2700K	LED life	L90 B10 Tj75°C
Luminaire efficacy	87.47lm/W	Operating temperature	-20°C to +50°C
Beam angle	Diffused	Light distribution	Diffused



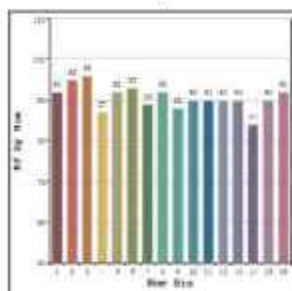
Technical Data*

Mounting detail	Cove Mounted	Safety class	III
Fixing detail	Mounting with Screw	Insulation class	III
Orientation	Fixed	Voltage	AC230V
IP rating	IP20	Forward voltage	DC24V
Glow wire test	850°	Driver	CV - Remote

*Kindly note that the Photometric & Technical data is obtained after the Svelte Strip is installed into the Trax Profile

Photometric Graphs

Hue Bin vs Rf Graph



Color Vector Graph



Spectrum vs Wavelength Graph



CIE Chromaticity Graph



Finish Options

Trim Finish

- ☐ Matt White
- ☒ Custom RAL Color

Max Length

5000MM

Dimming Options



Constant Voltage Driver
75w DC24V
Non Dimmable



Constant Voltage Driver
75w DC24V
Triac Dimmable



Constant Voltage Driver
75w DC24V
Analog 0-10V / 1-10V Dimmable



Constant Voltage Driver
75w DC24V
Dali Dimmable

L'azure constantly strives to improve our products using the latest technological advancements in the industry.
Due to which the data mentioned in the data sheet is subject to change without prior notice.

Trax Cove Uplight L - #2076



6W/M



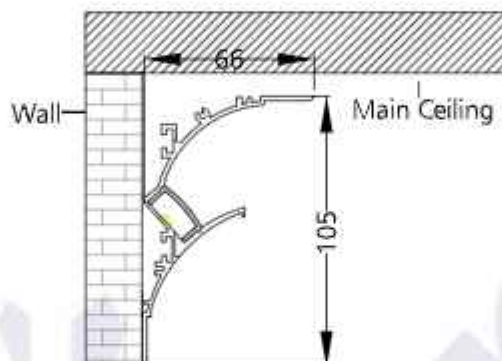
536lm/m



3000K



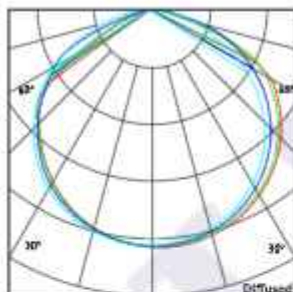
Diffused



Trimless Mounting

Photometric Data*

Light source	LED - Low Power	Light output ratio	68%
Power (W)	6W/M	Color rendering index (Ra)	>92
Delivered lumens	536lm/m	Color rendering index (R9)	>50
Source lumens	786lm/m	Binning MacAdam	<3 SDCM
Colour temperature (K)	3000K	LED life	L90 B10 Tj75°C
Luminaire efficacy	89.49lm/W	Operating temperature	-20°C to +50°C
Beam angle	Diffused	Light distribution	Diffused



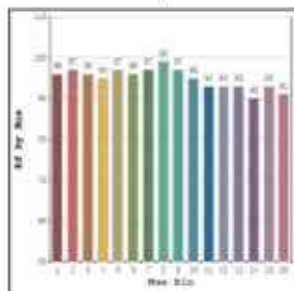
Technical Data*

Mounting detail	Cove Mounted	Safety class	III
Fixing detail	Mounting with Screw	Insulation class	III
Orientation	Fixed	Voltage	AC230V
IP rating	IP20	Forward voltage	DC24V
Glow wire test	850°	Driver	CV - Remote

*Kindly note that the Photometric & Technical data is obtained after the Svelte Strip is installed into the Trax Profile

Photometric Graphs

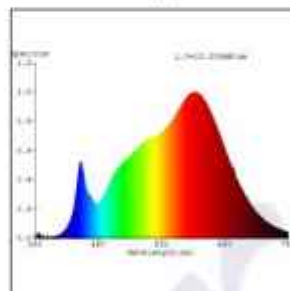
Hue Bin vs Rf Graph



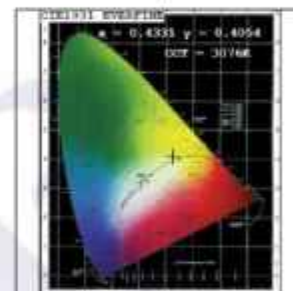
Color Vector Graph



Spectrum vs Wavelength Graph



CIE Chromaticity Graph



Finish Options

Trim Finish

- ☐ Matt White
- ☒ Custom RAL Color

Max Length

5000MM

Dimming Options



Constant Voltage Driver
75w DC24V
Non Dimmable



Constant Voltage Driver
75w DC24V
Triac Dimmable



Constant Voltage Driver
75w DC24V
Analog 0-10V / 1-10V Dimmable



Constant Voltage Driver
75w DC24V
Dali Dimmable

L'azure constantly strives to improve our products using the latest technological advancements in the industry.
Due to which the data mentioned in the data sheet is subject to change without prior notice.

Trax Cove Uplight L - #2076



6W/M



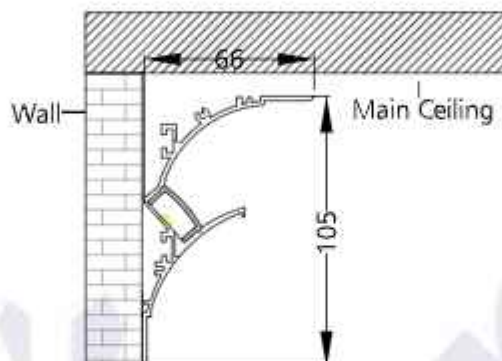
553lm/m



4000K



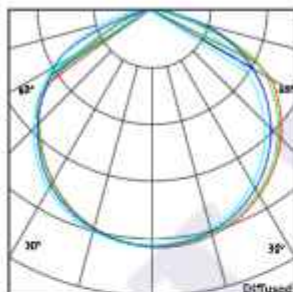
Diffused



Trimless Mounting

Photometric Data*

Light source	LED - Low Power	Light output ratio	66%
Power (W)	6W/M	Color rendering index (Ra)	>92
Delivered lumens	553lm/m	Color rendering index (R9)	>50
Source lumens	834lm/m	Binning MacAdam	<3 SDCM
Colour temperature (K)	4000K	LED life	L90 B10 Tj75°C
Luminaire efficacy	92.18lm/W	Operating temperature	-20°C to +50°C
Beam angle	Diffused	Light distribution	Diffused



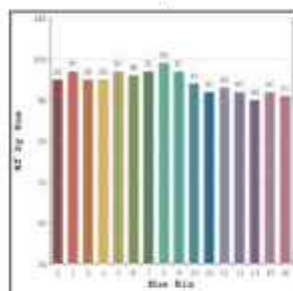
Technical Data*

Mounting detail	Cove Mounted	Safety class	III
Fixing detail	Mounting with Screw	Insulation class	III
Orientation	Fixed	Voltage	AC230V
IP rating	IP20	Forward voltage	DC24V
Glow wire test	850°	Driver	CV - Remote

*Kindly note that the Photometric & Technical data is obtained after the Svelte Strip is installed into the Trax Profile

Photometric Graphs

Hue Bin vs Rf Graph



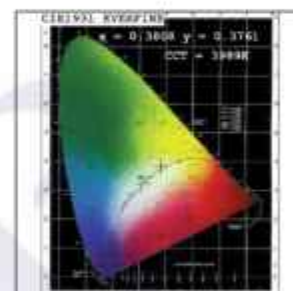
Color Vector Graph



Spectrum vs Wavelength Graph



CIE Chromaticity Graph



Finish Options

Trim Finish

- ☐ Matt White
- ☒ Custom RAL Color

Max Length

5000MM

Dimming Options



Constant Voltage Driver
75w DC24V
Non Dimmable



Constant Voltage Driver
75w DC24V
Triac Dimmable



Constant Voltage Driver
75w DC24V
Analog 0-10V / 1-10V Dimmable



Constant Voltage Driver
75w DC24V
Dali Dimmable

L'azure constantly strives to improve our products using the latest technological advancements in the industry.
Due to which the data mentioned in the data sheet is subject to change without prior notice.

Trax Cove Uplight L - #2076



12W/M



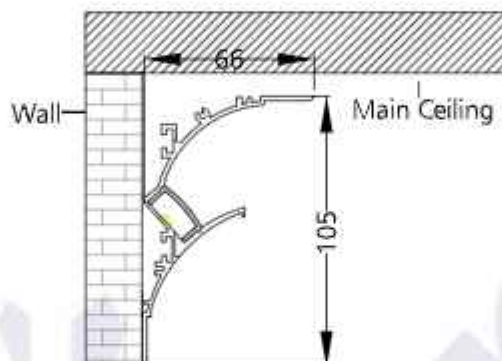
1045lm/m



2700K



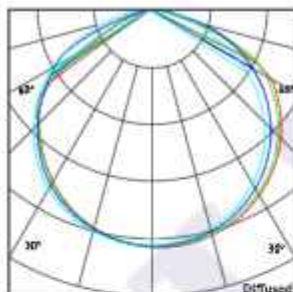
Diffused



Trimless Mounting

Photometric Data*

Light source	LED - Low Power	Light output ratio	69%
Power (W)	12W/M	Color rendering index (Ra)	>92
Delivered lumens	1045lm/m	Color rendering index (R9)	>50
Source lumens	1512lm/m	Binning MacAdam	<3 SDCM
Colour temperature (K)	2700K	LED life	L90 B10 Tj75°C
Luminaire efficacy	87.14lm/W	Operating temperature	-20°C to +50°C
Beam angle	Diffused	Light distribution	Diffused



Technical Data*

Mounting detail	Cove Mounted	Safety class	III
Fixing detail	Mounting with Screw	Insulation class	III
Orientation	Fixed	Voltage	AC230V
IP rating	IP20	Forward voltage	DC24V
Glow wire test	850°	Driver	CV - Remote

*Kindly note that the Photometric & Technical data is obtained after the Svelte Strip is installed into the Trax Profile

Photometric Graphs

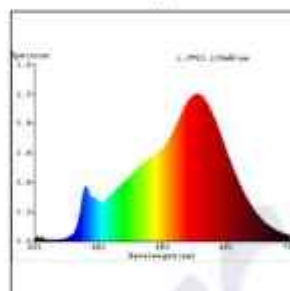
Hue Bin vs Rf Graph



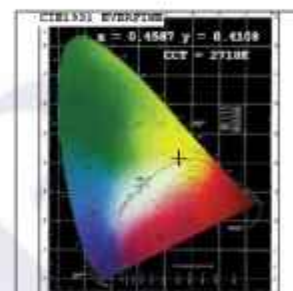
Color Vector Graph



Spectrum vs Wavelength Graph



CIE Chromaticity Graph



Finish Options

Trim Finish

- ☐ Matt White
- ☒ Custom RAL Color

Max Length

5000MM

Dimming Options



Constant Voltage Driver
75w DC24V
Non Dimmable



Constant Voltage Driver
75w DC24V
Triac Dimmable



Constant Voltage Driver
75w DC24V
Analog 0-10V / 1-10V Dimmable



Constant Voltage Driver
75w DC24V
Dali Dimmable

L'azure constantly strives to improve our products using the latest technological advancements in the industry.
Due to which the data mentioned in the data sheet is subject to change without prior notice.

Trax Cove Uplight L - #2076



12W/M



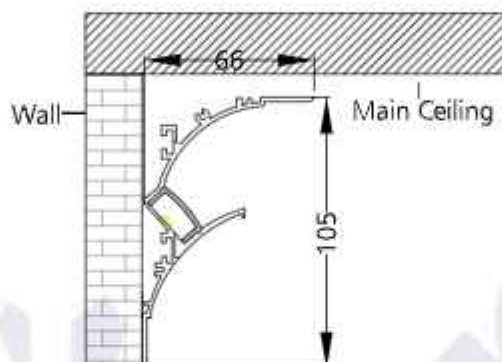
1069lm/m



3000K



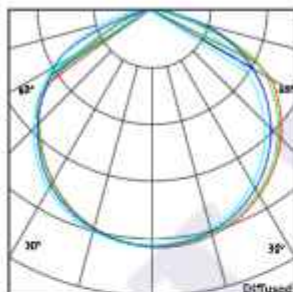
Diffused



Trimless Mounting

Photometric Data*

Light source	LED - Low Power	Light output ratio	68%
Power (W)	12W/M	Color rendering index (Ra)	>92
Delivered lumens	1069lm/m	Color rendering index (R9)	>50
Source lumens	1572lm/m	Binning MacAdam	<3 SDCM
Colour temperature (K)	3000K	LED life	L90 B10 Tj75°C
Luminaire efficacy	89.16lm/W	Operating temperature	-20°C to +50°C
Beam angle	Diffused	Light distribution	Diffused



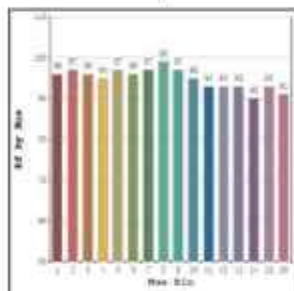
Technical Data*

Mounting detail	Cove Mounted	Safety class	III
Fixing detail	Mounting with Screw	Insulation class	III
Orientation	Fixed	Voltage	AC230V
IP rating	IP20	Forward voltage	DC24V
Glow wire test	850°	Driver	CV - Remote

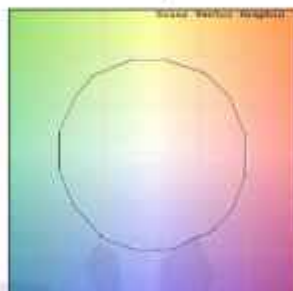
*Kindly note that the Photometric & Technical data is obtained after the Svelte Strip is installed into the Trax Profile

Photometric Graphs

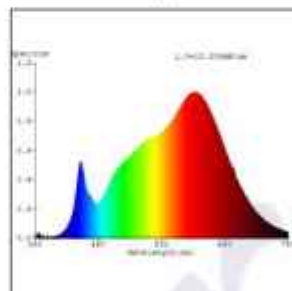
Hue Bin vs Rf Graph



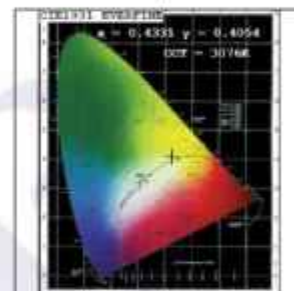
Color Vector Graph



Spectrum vs Wavelength Graph



CIE Chromaticity Graph



Finish Options

Trim Finish

- ☐ Matt White
- ☒ Custom RAL Color

Max Length

5000MM

Dimming Options



Constant Voltage Driver
75w DC24V
Non Dimmable



Constant Voltage Driver
75w DC24V
Triac Dimmable



Constant Voltage Driver
75w DC24V
Analog 0-10V / 1-10V Dimmable



Constant Voltage Driver
75w DC24V
Dali Dimmable

L'azure constantly strives to improve our products using the latest technological advancements in the industry.
Due to which the data mentioned in the data sheet is subject to change without prior notice.

Trax Cove Uplight L - #2076



12W/M



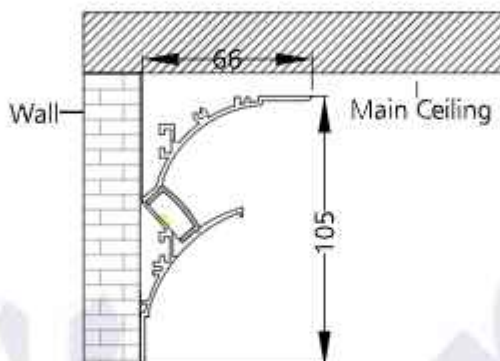
1102lm/m



4000K



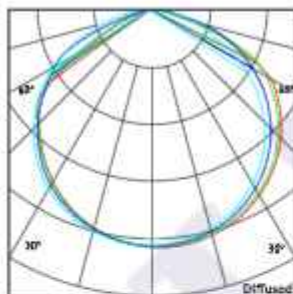
Diffused



Trimless Mounting

Photometric Data*

Light source	LED - Low Power	Light output ratio	66%
Power (W)	12W/M	Color rendering index (Ra)	>92
Delivered lumens	1102lm/m	Color rendering index (R9)	>50
Source lumens	1668lm/m	Binning MacAdam	<3 SDCM
Colour temperature (K)	4000K	LED life	L90 B10 Tj75°C
Luminaire efficacy	91.85lm/W	Operating temperature	-20°C to +50°C
Beam angle	Diffused	Light distribution	Diffused



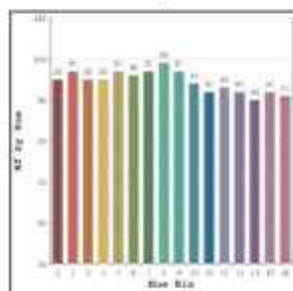
Technical Data*

Mounting detail	Cove Mounted	Safety class	III
Fixing detail	Mounting with Screw	Insulation class	III
Orientation	Fixed	Voltage	AC230V
IP rating	IP20	Forward voltage	DC24V
Glow wire test	850°	Driver	CV - Remote

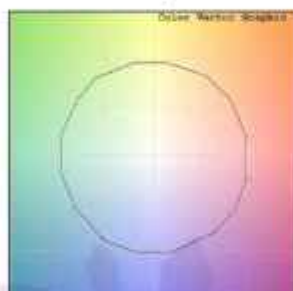
*Kindly note that the Photometric & Technical data is obtained after the Svelte Strip is installed into the Trax Profile

Photometric Graphs

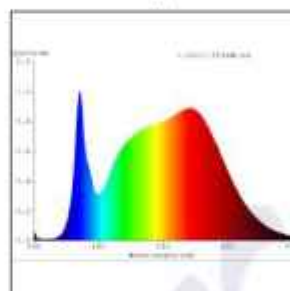
Hue Bin vs Rf Graph



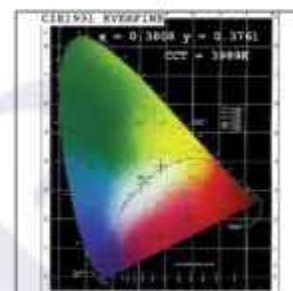
Color Vector Graph



Spectrum vs Wavelength Graph



CIE Chromaticity Graph



Finish Options

Trim Finish

- ☐ Matt White
- ☒ Custom RAL Color

Max Length

5000MM

Dimming Options



Constant Voltage Driver
75w DC24V
Non Dimmable



Constant Voltage Driver
75w DC24V
Triac Dimmable



Constant Voltage Driver
75w DC24V
Analog 0-10V / 1-10V Dimmable



Constant Voltage Driver
75w DC24V
Dali Dimmable

L'azure constantly strives to improve our products using the latest technological advancements in the industry.
Due to which the data mentioned in the data sheet is subject to change without prior notice.

Trax Cove Uplight L - #2076



24W/M



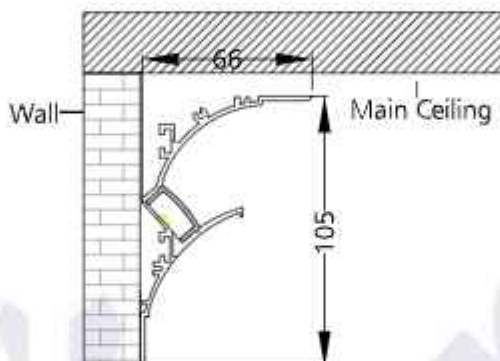
2095lm/m



2700K



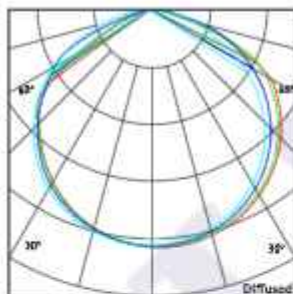
Diffused



Trimless Mounting

Photometric Data*

Light source	LED - Low Power	Light output ratio	69%
Power (W)	24W/M	Color rendering index (Ra)	>92
Delivered lumens	2095lm/m	Color rendering index (R9)	>50
Source lumens	3024lm/m	Binning MacAdam	<3 SDCM
Colour temperature (K)	2700K	LED life	L90 B10 Tj75°C
Luminaire efficacy	87.31lm/W	Operating temperature	-20°C to +50°C
Beam angle	Diffused	Light distribution	Diffused



Technical Data*

Mounting detail	Cove Mounted	Safety class	III
Fixing detail	Mounting with Screw	Insulation class	III
Orientation	Fixed	Voltage	AC230V
IP rating	IP20	Forward voltage	DC24V
Glow wire test	850°	Driver	CV - Remote

*Kindly note that the Photometric & Technical data is obtained after the Svelte Strip is installed into the Trax Profile

Photometric Graphs

Hue Bin vs Rf Graph



Color Vector Graph



Spectrum vs Wavelength Graph



CIE Chromaticity Graph



Finish Options

Trim Finish

- ☐ Matt White
- ☒ Custom RAL Color

Max Length

5000MM

Dimming Options



Constant Voltage Driver
75w DC24V
Non Dimmable



Constant Voltage Driver
75w DC24V
Triac Dimmable



Constant Voltage Driver
75w DC24V
Analog 0-10V / 1-10V Dimmable



Constant Voltage Driver
75w DC24V
Dali Dimmable

L'azure constantly strives to improve our products using the latest technological advancements in the industry.
Due to which the data mentioned in the data sheet is subject to change without prior notice.

Trax Cove Uplight L - #2076



24W/M



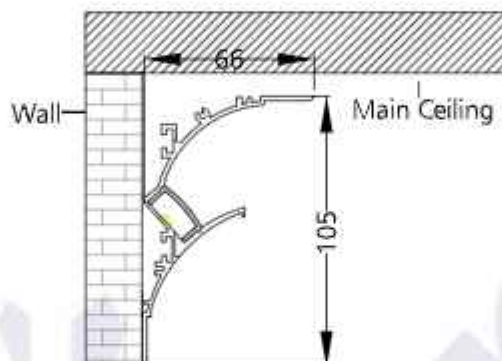
2147lm/m



3000K



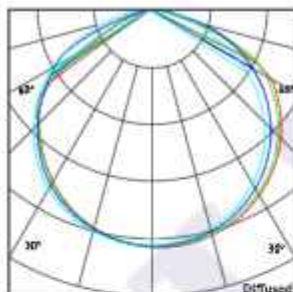
Diffused



Trimless Mounting

Photometric Data*

Light source	LED - Low Power	Light output ratio	68%
Power (W)	24W/M	Color rendering index (Ra)	>92
Delivered lumens	2147lm/m	Color rendering index (R9)	>50
Source lumens	3144lm/m	Binning MacAdam	<3 SDCM
Colour temperature (K)	3000K	LED life	L90 B10 Tj75°C
Luminaire efficacy	89.49lm/W	Operating temperature	-20°C to +50°C
Beam angle	Diffused	Light distribution	Diffused



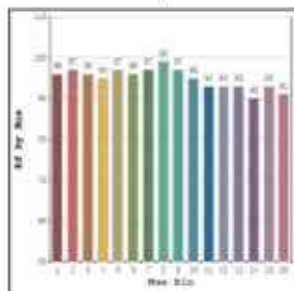
Technical Data*

Mounting detail	Cove Mounted	Safety class	III
Fixing detail	Mounting with Screw	Insulation class	III
Orientation	Fixed	Voltage	AC230V
IP rating	IP20	Forward voltage	DC24V
Glow wire test	850°	Driver	CV - Remote

*Kindly note that the Photometric & Technical data is obtained after the Svelte Strip is installed into the Trax Profile

Photometric Graphs

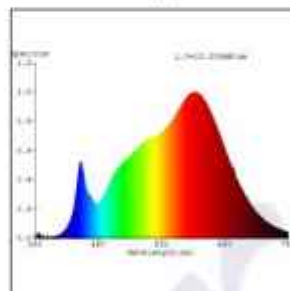
Hue Bin vs Rf Graph



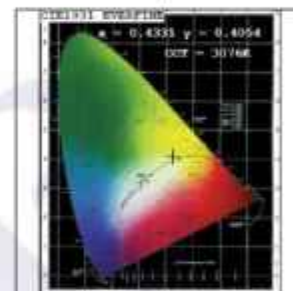
Color Vector Graph



Spectrum vs Wavelength Graph



CIE Chromaticity Graph



Finish Options

Trim Finish

- ☐ Matt White
- ☒ Custom RAL Color

Max Length

5000MM

Dimming Options



Constant Voltage Driver
75w DC24V
Non Dimmable



Constant Voltage Driver
75w DC24V
Triac Dimmable



Constant Voltage Driver
75w DC24V
Analog 0-10V / 1-10V Dimmable



Constant Voltage Driver
75w DC24V
Dali Dimmable

L'azure constantly strives to improve our products using the latest technological advancements in the industry.
Due to which the data mentioned in the data sheet is subject to change without prior notice.

Trax Cove Uplight L - #2076



24W/M



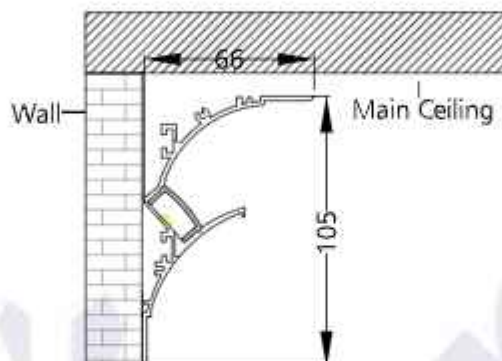
2212lm/m



4000K



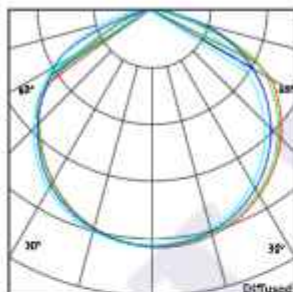
Diffused



Trimless Mounting

Photometric Data*

Light source	LED - Low Power	Light output ratio	66%
Power (W)	24W/M	Color rendering index (Ra)	>92
Delivered lumens	2212lm/m	Color rendering index (R9)	>50
Source lumens	3336lm/m	Binning MacAdam	<3 SDCM
Colour temperature (K)	4000K	LED life	L90 B10 Tj75°C
Luminaire efficacy	92.18lm/W	Operating temperature	-20°C to +50°C
Beam angle	Diffused	Light distribution	Diffused



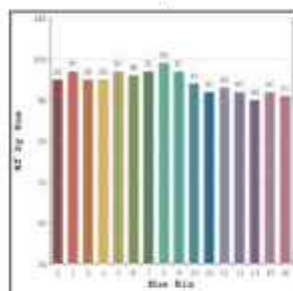
Technical Data*

Mounting detail	Cove Mounted	Safety class	III
Fixing detail	Mounting with Screw	Insulation class	III
Orientation	Fixed	Voltage	AC230V
IP rating	IP20	Forward voltage	DC24V
Glow wire test	850°	Driver	CV - Remote

*Kindly note that the Photometric & Technical data is obtained after the Svelte Strip is installed into the Trax Profile

Photometric Graphs

Hue Bin vs Rf Graph



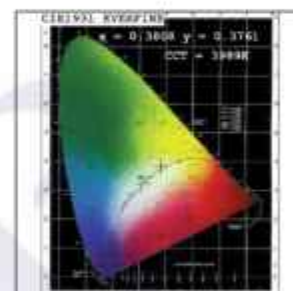
Color Vector Graph



Spectrum vs Wavelength Graph



CIE Chromaticity Graph



Finish Options

Trim Finish

- ☐ Matt White
- ☒ Custom RAL Color

Max Length

5000MM

Dimming Options



Constant Voltage Driver
75w DC24V
Non Dimmable



Constant Voltage Driver
75w DC24V
Triac Dimmable



Constant Voltage Driver
75w DC24V
Analog 0-10V / 1-10V Dimmable



Constant Voltage Driver
75w DC24V
Dali Dimmable

L'azure constantly strives to improve our products using the latest technological advancements in the industry.
Due to which the data mentioned in the data sheet is subject to change without prior notice.

Trax Cove Uplight L - #2076



20W/M



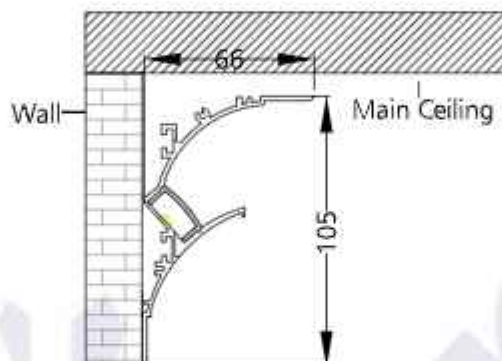
1752lm/m to
1845lm/m



2700K to
6500K



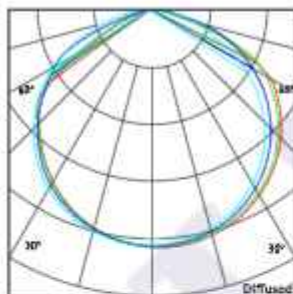
Diffused



Trimless Mounting

Photometric Data*

Light source	LED - Low Power	Light output ratio	69%
Power (W)	20W/M	Color rendering index (Ra)	>92
Delivered lumens	1752lm/m to 1845lm/m	Color rendering index (R9)	>50
Source lumens	2520lm/m to 2640lm/m	Binning MacAdam	<3 SDCM
Colour temperature (K)	2700K to 6500K	LED life	L90 B10 Tj75°C
Luminaire efficacy	87.61lm/W to 92.25lm/W	Operating temperature	-20°C to +50°C
Beam angle	Diffused	Light distribution	Diffused



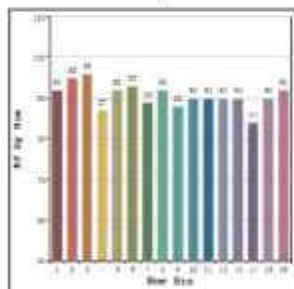
Technical Data*

Mounting detail	Cove Mounted	Safety class	III
Fixing detail	Mounting with Screw	Insulation class	III
Orientation	Fixed	Voltage	AC230V
IP rating	IP20	Forward voltage	DC24V
Glow wire test	850°	Driver	CV - Remote

*Kindly note that the Photometric & Technical data is obtained after the Svelte Strip is installed into the Trax Profile

Photometric Graphs

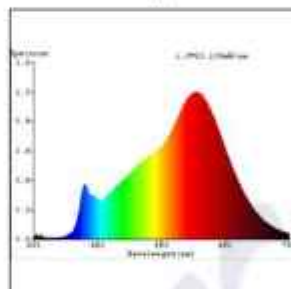
Hue Bin vs Rf Graph



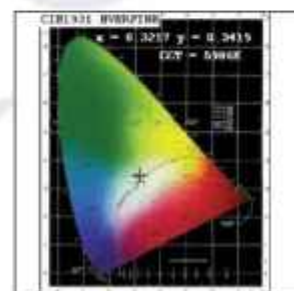
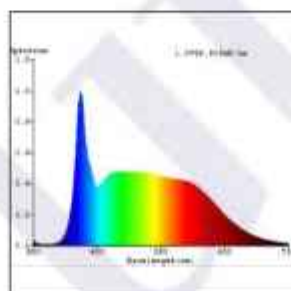
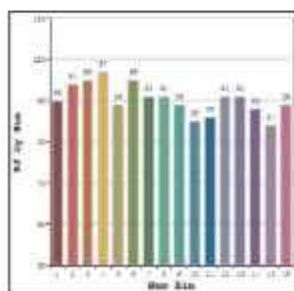
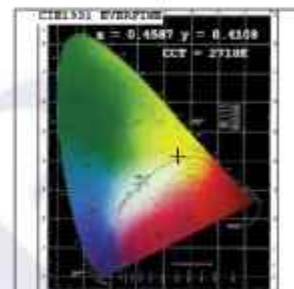
Color Vector Graph



Spectrum vs Wavelength Graph



CIE Chromaticity Graph



Finish Options

Trim Finish

- ☐ Matt White
- ☒ Custom RAL Color

Max Length

5000MM

Dimming Options



Constant Voltage Driver
75w DC24V
Non Dimmable



Constant Voltage Driver
75w DC24V
Triac Dimmable



Constant Voltage Driver
75w DC24V
Analog 0-10V / 1-10V Dimmable



Constant Voltage Driver
75w DC24V
Dali Dimmable

L'azure constantly strives to improve our products using the latest technological advancements in the industry.
Due to which the data mentioned in the data sheet is subject to change without prior notice.