

# Trax Floor Curve S - #2078



6W/M



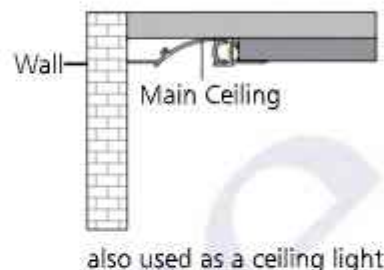
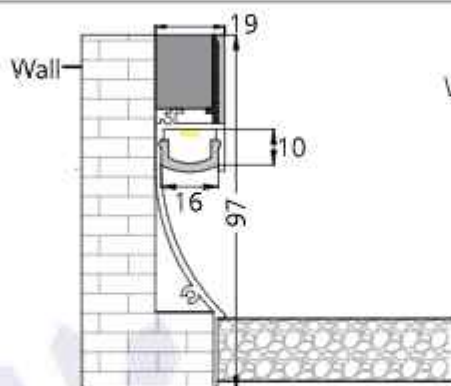
442lm/m



2700K



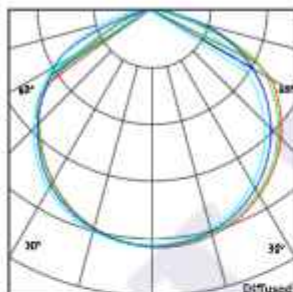
Diffused



also used as a ceiling light

## Photometric Data\*

|                        |                 |                            |                |
|------------------------|-----------------|----------------------------|----------------|
| Light source           | LED - Low Power | Light output ratio         | 58%            |
| Power (W)              | 6W/M            | Color rendering index (Ra) | >92            |
| Delivered lumens       | 442lm/m         | Color rendering index (R9) | >50            |
| Source lumens          | 756lm/m         | Binning MacAdam            | <3 SDCM        |
| Colour temperature (K) | 2700K           | LED life                   | L90 B10 Tj75°C |
| Luminaire efficacy     | 73.67lm/W       | Operating temperature      | -20°C to +50°C |
| Beam angle             | Diffused        | Light distribution         | Diffused       |



## Technical Data\*

|                 |                |                  |             |
|-----------------|----------------|------------------|-------------|
| Mounting detail | Floor Mounted  | Safety class     | III         |
| Fixing detail   | Mounting Clamp | Insulation class | III         |
| Orientation     | Fixed          | Voltage          | AC230V      |
| IP rating       | IP20           | Forward voltage  | DC24V       |
| Glow wire test  | 850°           | Driver           | CV - Remote |

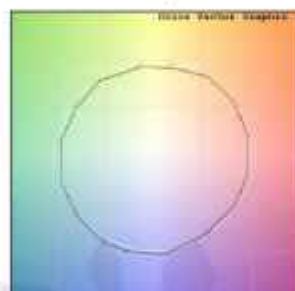
\*Kindly note that the Photometric & Technical data is obtained after the Svelte Strip is installed into the Trax Profile

## Photometric Graphs

Hue Bin vs Rf Graph



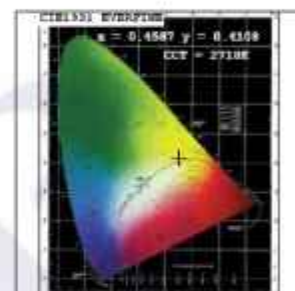
Color Vector Graph



Spectrum vs Wavelength Graph



CIE Chromaticity Graph



## Finish Options

Max Length

- ☐ Matt White
- ☒ Custom RAL Color

## Dimming Options



Constant Voltage Driver  
75w DC24V  
Non Dimmable



Constant Voltage Driver  
75w DC24V  
Triac Dimmable



Constant Voltage Driver  
75w DC24V  
Analog 0-10V / 1-10V Dimmable



Constant Voltage Driver  
75w DC24V  
Dali Dimmable

L'azure constantly strives to improve our products using the latest technological advancements in the industry.  
Due to which the data mentioned in the data sheet is subject to change without prior notice.

# Trax Floor Curve S - #2078



6W/M



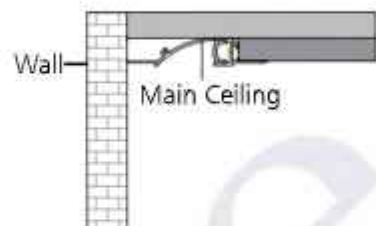
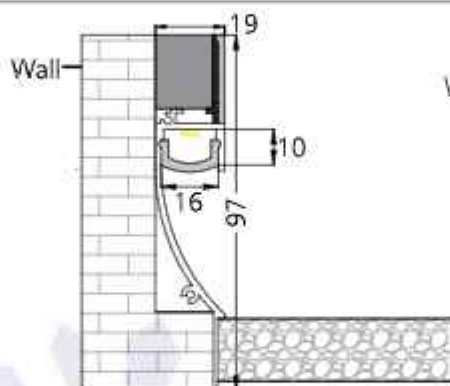
452lm/m



3000K



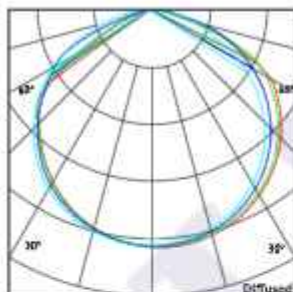
Diffused



also used as a ceiling light

## Photometric Data\*

|                        |                 |                            |                |
|------------------------|-----------------|----------------------------|----------------|
| Light source           | LED - Low Power | Light output ratio         | 57%            |
| Power (W)              | 6W/M            | Color rendering index (Ra) | >92            |
| Delivered lumens       | 452lm/m         | Color rendering index (R9) | >50            |
| Source lumens          | 786lm/m         | Binning MacAdam            | <3 SDCM        |
| Colour temperature (K) | 3000K           | LED life                   | L90 B10 Tj75°C |
| Luminaire efficacy     | 75.37lm/W       | Operating temperature      | -20°C to +50°C |
| Beam angle             | Diffused        | Light distribution         | Diffused       |



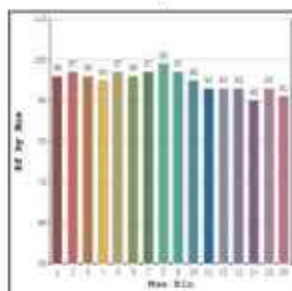
## Technical Data\*

|                 |                |                  |             |
|-----------------|----------------|------------------|-------------|
| Mounting detail | Floor Mounted  | Safety class     | III         |
| Fixing detail   | Mounting Clamp | Insulation class | III         |
| Orientation     | Fixed          | Voltage          | AC230V      |
| IP rating       | IP20           | Forward voltage  | DC24V       |
| Glow wire test  | 850°           | Driver           | CV - Remote |

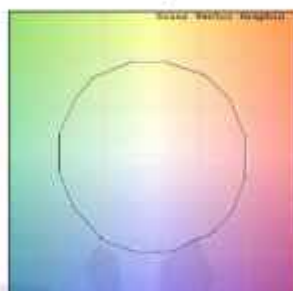
\*Kindly note that the Photometric & Technical data is obtained after the Svelte Strip is installed into the Trax Profile

## Photometric Graphs

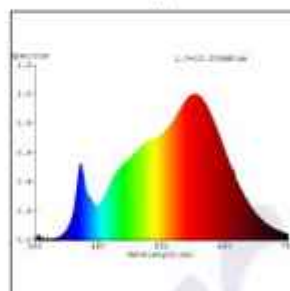
Hue Bin vs Rf Graph



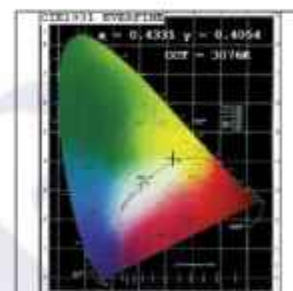
Color Vector Graph



Spectrum vs Wavelength Graph



CIE Chromaticity Graph



## Finish Options

### Body Finish

- ☐ Matt White
- ☒ Custom RAL Color

### Max Length

5000MM

## Dimming Options



Constant Voltage Driver  
75w DC24V  
Non Dimmable



Constant Voltage Driver  
75w DC24V  
Triac Dimmable



Constant Voltage Driver  
75w DC24V  
Analog 0-10V / 1-10V Dimmable



Constant Voltage Driver  
75w DC24V  
Dali Dimmable

L'azure constantly strives to improve our products using the latest technological advancements in the industry.  
Due to which the data mentioned in the data sheet is subject to change without prior notice.



# Trax Floor Curve S - #2078



6W/M



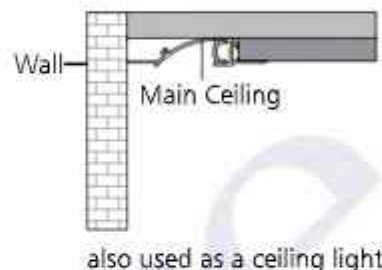
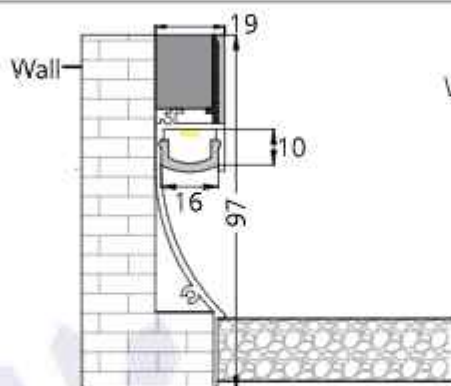
465lm/m



4000K

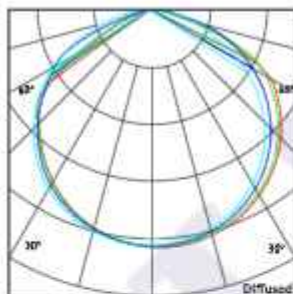


Diffused



## Photometric Data\*

|                        |                 |                            |                |
|------------------------|-----------------|----------------------------|----------------|
| Light source           | LED - Low Power | Light output ratio         | 55%            |
| Power (W)              | 6W/M            | Color rendering index (Ra) | >92            |
| Delivered lumens       | 465lm/m         | Color rendering index (R9) | >50            |
| Source lumens          | 834lm/m         | Binning MacAdam            | <3 SDCM        |
| Colour temperature (K) | 4000K           | LED life                   | L90 B10 Tj75°C |
| Luminaire efficacy     | 77.63lm/W       | Operating temperature      | -20°C to +50°C |
| Beam angle             | Diffused        | Light distribution         | Diffused       |



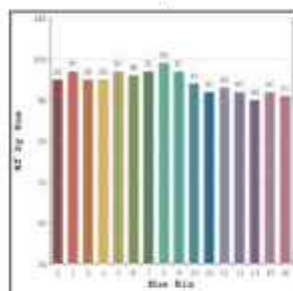
## Technical Data\*

|                 |                |                  |             |
|-----------------|----------------|------------------|-------------|
| Mounting detail | Floor Mounted  | Safety class     | III         |
| Fixing detail   | Mounting Clamp | Insulation class | III         |
| Orientation     | Fixed          | Voltage          | AC230V      |
| IP rating       | IP20           | Forward voltage  | DC24V       |
| Glow wire test  | 850°           | Driver           | CV - Remote |

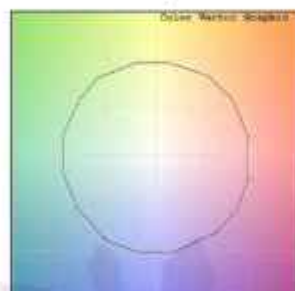
\*Kindly note that the Photometric & Technical data is obtained after the Svelte Strip is installed into the Trax Profile

## Photometric Graphs

Hue Bin vs Rf Graph



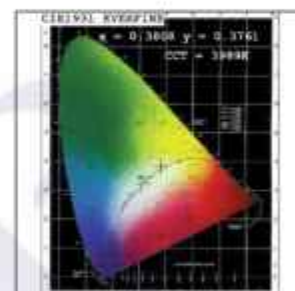
Color Vector Graph



Spectrum vs Wavelength Graph



CIE Chromaticity Graph



## Finish Options

### Body Finish

- ☐ Matt White
- ☒ Custom RAL Color

### Max Length

5000MM

## Dimming Options



Constant Voltage Driver  
75w DC24V  
Non Dimmable



Constant Voltage Driver  
75w DC24V  
Triac Dimmable



Constant Voltage Driver  
75w DC24V  
Analog 0-10V / 1-10V Dimmable



Constant Voltage Driver  
75w DC24V  
Dali Dimmable

# Trax Floor Curve S - #2078



12W/M



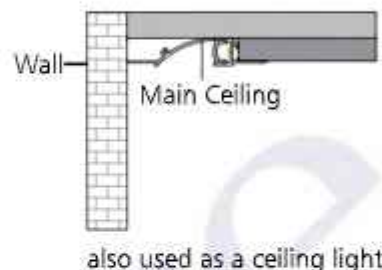
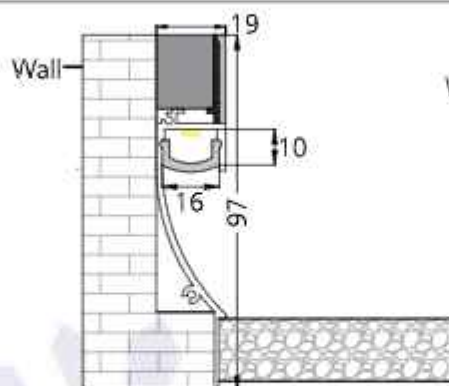
880lm/m



2700K

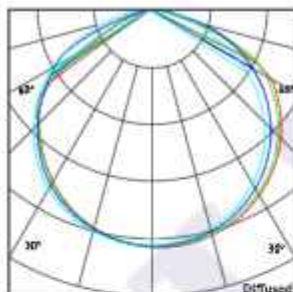


Diffused



## Photometric Data\*

|                        |                 |                            |                |
|------------------------|-----------------|----------------------------|----------------|
| Light source           | LED - Low Power | Light output ratio         | 58%            |
| Power (W)              | 12W/M           | Color rendering index (Ra) | >92            |
| Delivered lumens       | 880lm/m         | Color rendering index (R9) | >50            |
| Source lumens          | 1512lm/m        | Binning MacAdam            | <3 SDCM        |
| Colour temperature (K) | 2700K           | LED life                   | L90 B10 Tj75°C |
| Luminaire efficacy     | 73.38lm/W       | Operating temperature      | -20°C to +50°C |
| Beam angle             | Diffused        | Light distribution         | Diffused       |



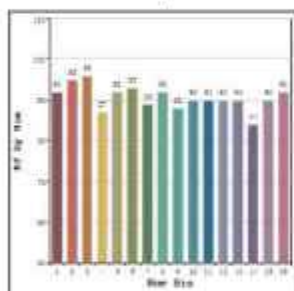
## Technical Data\*

|                 |                |                  |             |
|-----------------|----------------|------------------|-------------|
| Mounting detail | Floor Mounted  | Safety class     | III         |
| Fixing detail   | Mounting Clamp | Insulation class | III         |
| Orientation     | Fixed          | Voltage          | AC230V      |
| IP rating       | IP20           | Forward voltage  | DC24V       |
| Glow wire test  | 850°           | Driver           | CV - Remote |

\*Kindly note that the Photometric & Technical data is obtained after the Svelte Strip is installed into the Trax Profile

## Photometric Graphs

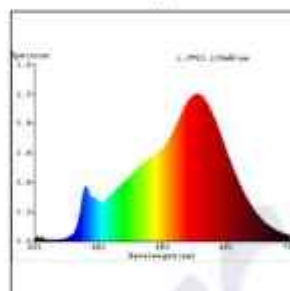
Hue Bin vs Rf Graph



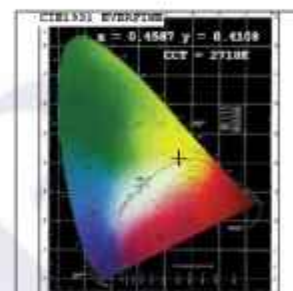
Color Vector Graph



Spectrum vs Wavelength Graph



CIE Chromaticity Graph



## Finish Options

### Body Finish

- ☐ Matt White
- ☒ Custom RAL Color

### Max Length

5000MM

## Dimming Options



Constant Voltage Driver  
75w DC24V  
Non Dimmable



Constant Voltage Driver  
75w DC24V  
Triac Dimmable



Constant Voltage Driver  
75w DC24V  
Analog 0-10V / 1-10V Dimmable



Constant Voltage Driver  
75w DC24V  
Dali Dimmable

L'azure constantly strives to improve our products using the latest technological advancements in the industry.  
Due to which the data mentioned in the data sheet is subject to change without prior notice.



# Trax Floor Curve S - #2078



12W/M



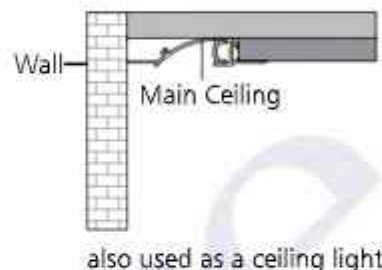
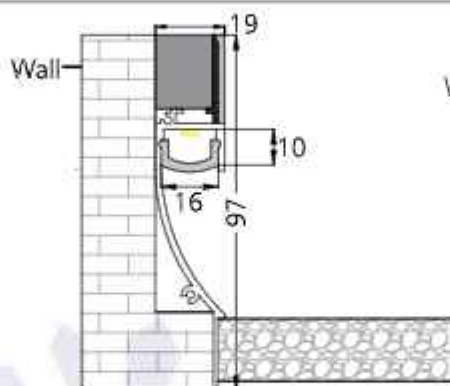
901lm/m



3000K

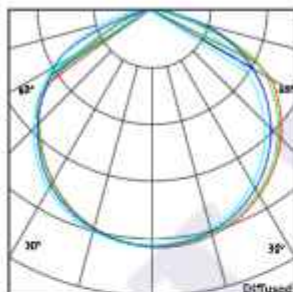


Diffused



## Photometric Data\*

|                        |                 |                            |                |
|------------------------|-----------------|----------------------------|----------------|
| Light source           | LED - Low Power | Light output ratio         | 57%            |
| Power (W)              | 12W/M           | Color rendering index (Ra) | >92            |
| Delivered lumens       | 901lm/m         | Color rendering index (R9) | >50            |
| Source lumens          | 1572lm/m        | Binning MacAdam            | <3 SDCM        |
| Colour temperature (K) | 3000K           | LED life                   | L90 B10 Tj75°C |
| Luminaire efficacy     | 75.08lm/W       | Operating temperature      | -20°C to +50°C |
| Beam angle             | Diffused        | Light distribution         | Diffused       |



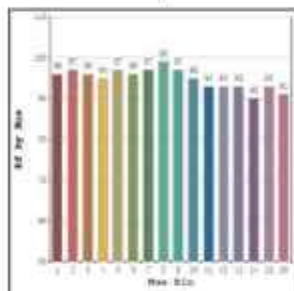
## Technical Data\*

|                 |                |                  |             |
|-----------------|----------------|------------------|-------------|
| Mounting detail | Floor Mounted  | Safety class     | III         |
| Fixing detail   | Mounting Clamp | Insulation class | III         |
| Orientation     | Fixed          | Voltage          | AC230V      |
| IP rating       | IP20           | Forward voltage  | DC24V       |
| Glow wire test  | 850°           | Driver           | CV - Remote |

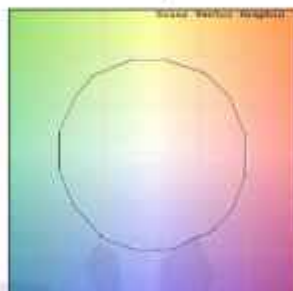
\*Kindly note that the Photometric & Technical data is obtained after the Svelte Strip is installed into the Trax Profile

## Photometric Graphs

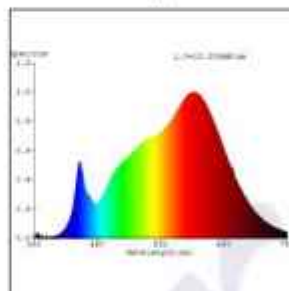
Hue Bin vs Rf Graph



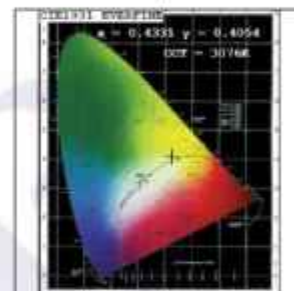
Color Vector Graph



Spectrum vs Wavelength Graph



CIE Chromaticity Graph



## Finish Options

### Body Finish

- ☐ Matt White
- ☒ Custom RAL Color

### Max Length

5000MM

## Dimming Options



Constant Voltage Driver  
75w DC24V  
Non Dimmable



Constant Voltage Driver  
75w DC24V  
Triac Dimmable



Constant Voltage Driver  
75w DC24V  
Analog 0-10V / 1-10V Dimmable



Constant Voltage Driver  
75w DC24V  
Dali Dimmable

L'azure constantly strives to improve our products using the latest technological advancements in the industry.  
Due to which the data mentioned in the data sheet is subject to change without prior notice.

# Trax Floor Curve S - #2078



12W/M



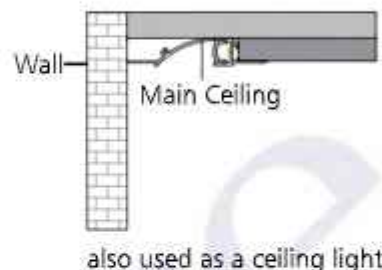
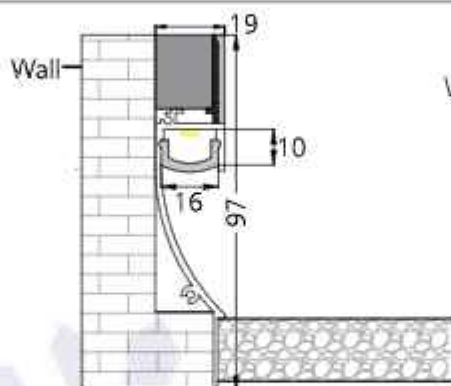
928lm/m



4000K

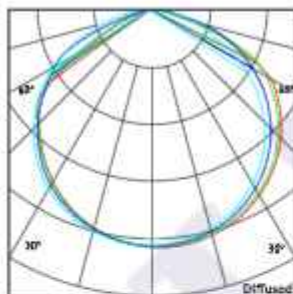


Diffused



## Photometric Data\*

|                        |                 |                            |                |
|------------------------|-----------------|----------------------------|----------------|
| Light source           | LED - Low Power | Light output ratio         | 55%            |
| Power (W)              | 12W/M           | Color rendering index (Ra) | >92            |
| Delivered lumens       | 928lm/m         | Color rendering index (R9) | >50            |
| Source lumens          | 1668lm/m        | Binning MacAdam            | <3 SDCM        |
| Colour temperature (K) | 4000K           | LED life                   | L90 B10 Tj75°C |
| Luminaire efficacy     | 77.35lm/W       | Operating temperature      | -20°C to +50°C |
| Beam angle             | Diffused        | Light distribution         | Diffused       |



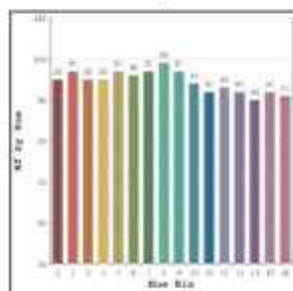
## Technical Data\*

|                 |                |                  |             |
|-----------------|----------------|------------------|-------------|
| Mounting detail | Floor Mounted  | Safety class     | III         |
| Fixing detail   | Mounting Clamp | Insulation class | III         |
| Orientation     | Fixed          | Voltage          | AC230V      |
| IP rating       | IP20           | Forward voltage  | DC24V       |
| Glow wire test  | 850°           | Driver           | CV - Remote |

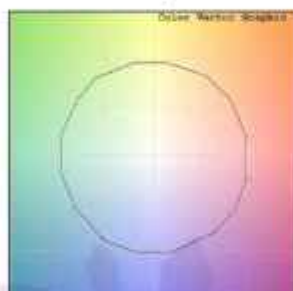
\*Kindly note that the Photometric & Technical data is obtained after the Svelte Strip is installed into the Trax Profile

## Photometric Graphs

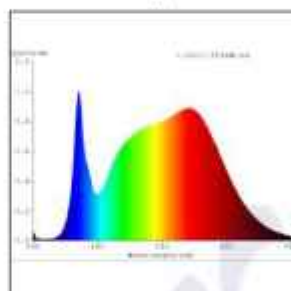
Hue Bin vs Rf Graph



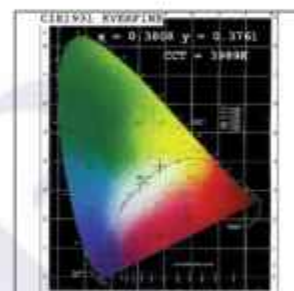
Color Vector Graph



Spectrum vs Wavelength Graph



CIE Chromaticity Graph



## Finish Options

### Body Finish

- ☐ Matt White
- ☒ Custom RAL Color

### Max Length

5000MM

## Dimming Options



Constant Voltage Driver  
75w DC24V  
Non Dimmable



Constant Voltage Driver  
75w DC24V  
Triac Dimmable



Constant Voltage Driver  
75w DC24V  
Analog 0-10V / 1-10V Dimmable



Constant Voltage Driver  
75w DC24V  
Dali Dimmable

L'azure constantly strives to improve our products using the latest technological advancements in the industry.  
Due to which the data mentioned in the data sheet is subject to change without prior notice.



# Trax Floor Curve S - #2078



24W/M



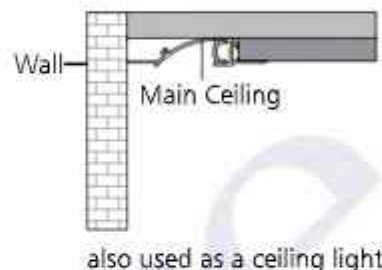
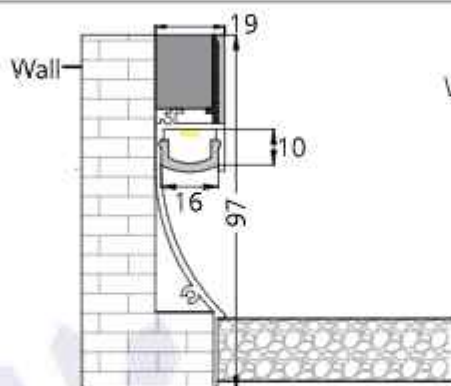
1764lm/m



2700K

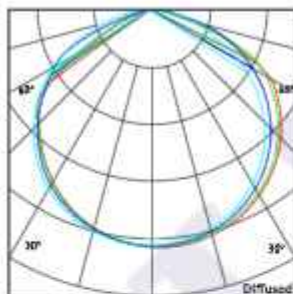


Diffused



## Photometric Data\*

|                        |                 |                            |                |
|------------------------|-----------------|----------------------------|----------------|
| Light source           | LED - Low Power | Light output ratio         | 58%            |
| Power (W)              | 24W/M           | Color rendering index (Ra) | >92            |
| Delivered lumens       | 1764lm/m        | Color rendering index (R9) | >50            |
| Source lumens          | 3024lm/m        | Binning MacAdam            | <3 SDCM        |
| Colour temperature (K) | 2700K           | LED life                   | L90 B10 Tj75°C |
| Luminaire efficacy     | 73.53lm/W       | Operating temperature      | -20°C to +50°C |
| Beam angle             | Diffused        | Light distribution         | Diffused       |



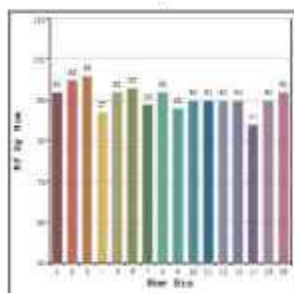
## Technical Data\*

|                 |                |                  |             |
|-----------------|----------------|------------------|-------------|
| Mounting detail | Floor Mounted  | Safety class     | III         |
| Fixing detail   | Mounting Clamp | Insulation class | III         |
| Orientation     | Fixed          | Voltage          | AC230V      |
| IP rating       | IP20           | Forward voltage  | DC24V       |
| Glow wire test  | 850°           | Driver           | CV - Remote |

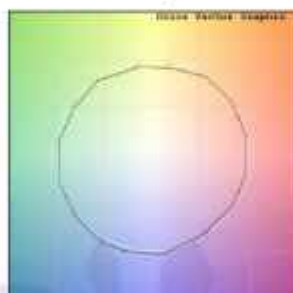
\*Kindly note that the Photometric & Technical data is obtained after the Svelte Strip is installed into the Trax Profile

## Photometric Graphs

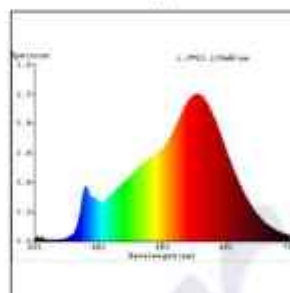
Hue Bin vs Rf Graph



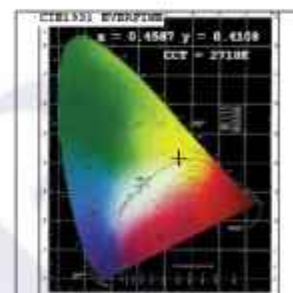
Color Vector Graph



Spectrum vs Wavelength Graph



CIE Chromaticity Graph



## Finish Options

### Body Finish

- ☐ Matt White
- ☒ Custom RAL Color

### Max Length

5000MM

## Dimming Options



Constant Voltage Driver  
75w DC24V  
Non Dimmable



Constant Voltage Driver  
75w DC24V  
Triac Dimmable



Constant Voltage Driver  
75w DC24V  
Analog 0-10V / 1-10V Dimmable



Constant Voltage Driver  
75w DC24V  
Dali Dimmable

L'azure constantly strives to improve our products using the latest technological advancements in the industry.  
Due to which the data mentioned in the data sheet is subject to change without prior notice.

# Trax Floor Curve S - #2078



24W/M



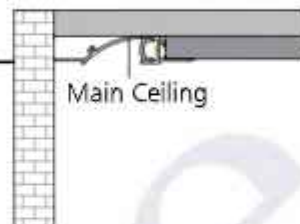
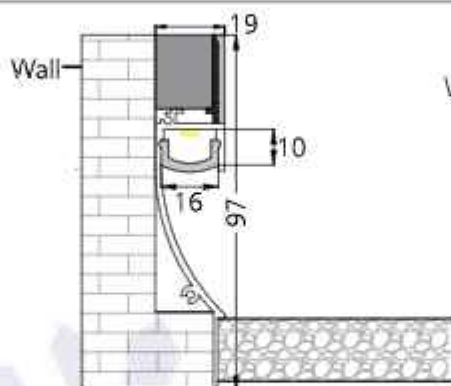
1808lm/m



3000K



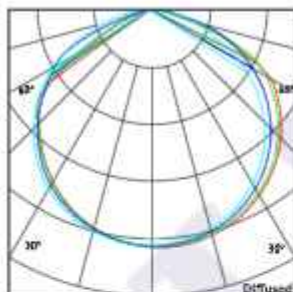
Diffused



also used as a ceiling light

## Photometric Data\*

|                        |                 |                            |                |
|------------------------|-----------------|----------------------------|----------------|
| Light source           | LED - Low Power | Light output ratio         | 57%            |
| Power (W)              | 24W/M           | Color rendering index (Ra) | >92            |
| Delivered lumens       | 1808lm/m        | Color rendering index (R9) | >50            |
| Source lumens          | 3144lm/m        | Binning MacAdam            | <3 SDCM        |
| Colour temperature (K) | 3000K           | LED life                   | L90 B10 Tj75°C |
| Luminaire efficacy     | 75.37lm/W       | Operating temperature      | -20°C to +50°C |
| Beam angle             | Diffused        | Light distribution         | Diffused       |



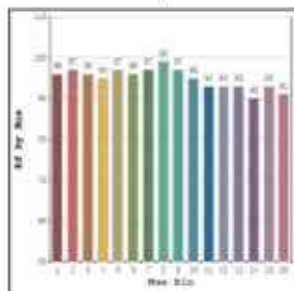
## Technical Data\*

|                 |                |                  |             |
|-----------------|----------------|------------------|-------------|
| Mounting detail | Floor Mounted  | Safety class     | III         |
| Fixing detail   | Mounting Clamp | Insulation class | III         |
| Orientation     | Fixed          | Voltage          | AC230V      |
| IP rating       | IP20           | Forward voltage  | DC24V       |
| Glow wire test  | 850°           | Driver           | CV - Remote |

\*Kindly note that the Photometric & Technical data is obtained after the Svelte Strip is installed into the Trax Profile

## Photometric Graphs

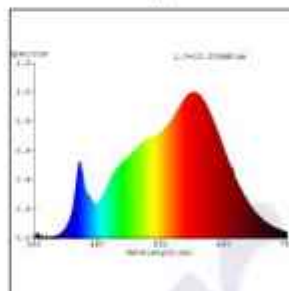
Hue Bin vs Rf Graph



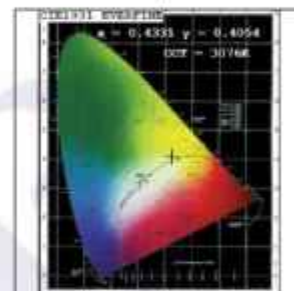
Color Vector Graph



Spectrum vs Wavelength Graph



CIE Chromaticity Graph



## Finish Options

### Body Finish

- ☐ Matt White
- ☒ Custom RAL Color

### Max Length

5000MM

## Dimming Options



Constant Voltage Driver  
75w DC24V  
Non Dimmable



Constant Voltage Driver  
75w DC24V  
Triac Dimmable



Constant Voltage Driver  
75w DC24V  
Analog 0-10V / 1-10V Dimmable



Constant Voltage Driver  
75w DC24V  
Dali Dimmable

L'azure constantly strives to improve our products using the latest technological advancements in the industry.  
Due to which the data mentioned in the data sheet is subject to change without prior notice.



# Trax Floor Curve S - #2078



24W/M



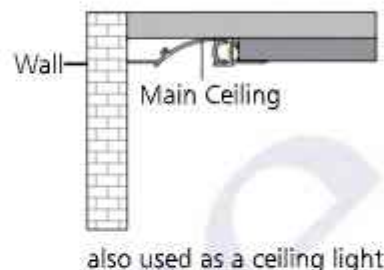
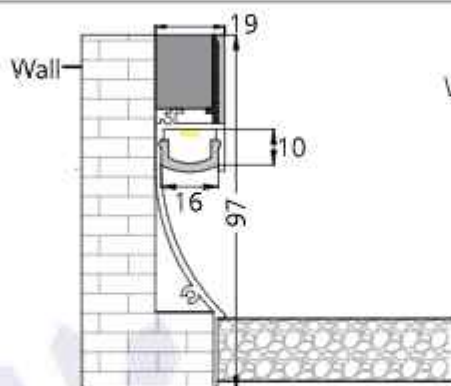
1863lm/m



4000K

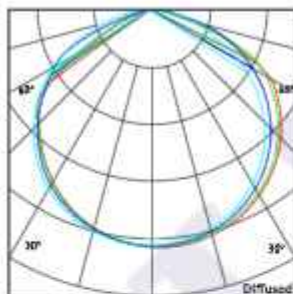


Diffused



## Photometric Data\*

|                        |                 |                            |                |
|------------------------|-----------------|----------------------------|----------------|
| Light source           | LED - Low Power | Light output ratio         | 55%            |
| Power (W)              | 24W/M           | Color rendering index (Ra) | >92            |
| Delivered lumens       | 1863lm/m        | Color rendering index (R9) | >50            |
| Source lumens          | 3336lm/m        | Binning MacAdam            | <3 SDCM        |
| Colour temperature (K) | 4000K           | LED life                   | L90 B10 Tj75°C |
| Luminaire efficacy     | 77.63lm/W       | Operating temperature      | -20°C to +50°C |
| Beam angle             | Diffused        | Light distribution         | Diffused       |



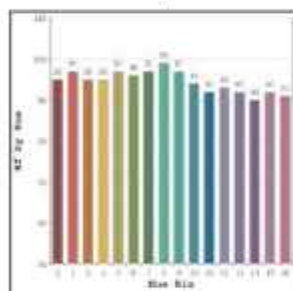
## Technical Data\*

|                 |                |                  |             |
|-----------------|----------------|------------------|-------------|
| Mounting detail | Floor Mounted  | Safety class     | III         |
| Fixing detail   | Mounting Clamp | Insulation class | III         |
| Orientation     | Fixed          | Voltage          | AC230V      |
| IP rating       | IP20           | Forward voltage  | DC24V       |
| Glow wire test  | 850°           | Driver           | CV - Remote |

\*Kindly note that the Photometric & Technical data is obtained after the Svelte Strip is installed into the Trax Profile

## Photometric Graphs

Hue Bin vs Rf Graph



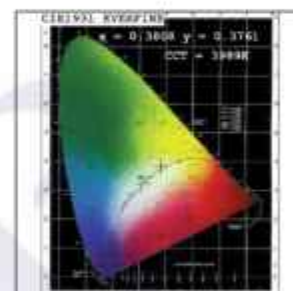
Color Vector Graph



Spectrum vs Wavelength Graph



CIE Chromaticity Graph



## Finish Options

### Body Finish

- ☐ Matt White
- ☒ Custom RAL Color

### Max Length

5000MM

## Dimming Options



Constant Voltage Driver  
75w DC24V  
Non Dimmable



Constant Voltage Driver  
75w DC24V  
Triac Dimmable



Constant Voltage Driver  
75w DC24V  
Analog 0-10V / 1-10V Dimmable



Constant Voltage Driver  
75w DC24V  
Dali Dimmable

L'azure constantly strives to improve our products using the latest technological advancements in the industry.  
Due to which the data mentioned in the data sheet is subject to change without prior notice.

# Trax Floor Curve S - #2078



20W/M



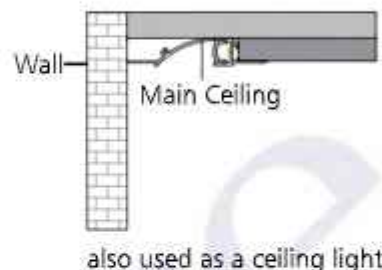
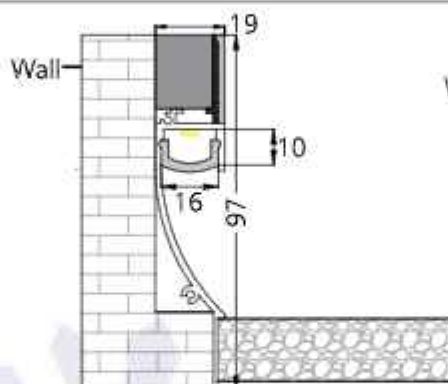
1475lm/m to  
1553lm/m



2700K to  
6500K



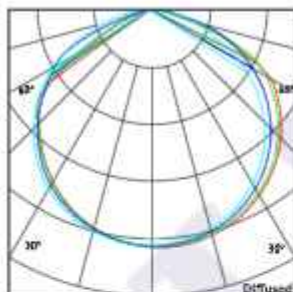
Diffused



## Photometric Data\*

|                        |                        |
|------------------------|------------------------|
| Light source           | LED - Low Power        |
| Power (W)              | 20W/M                  |
| Delivered lumens       | 1475lm/m to 1553lm/m   |
| Source lumens          | 2520lm/m to 2640lm/m   |
| Colour temperature (K) | 2700K to 6500K         |
| Luminaire efficacy     | 73.78lm/W to 77.69lm/W |
| Beam angle             | Diffused               |

|                            |                |
|----------------------------|----------------|
| Light output ratio         | 58%            |
| Color rendering index (Ra) | >92            |
| Color rendering index (R9) | >50            |
| Binning MacAdam            | <3 SDCM        |
| LED life                   | L90 B10 Tj75°C |
| Operating temperature      | -20°C to +50°C |
| Light distribution         | Diffused       |



## Technical Data\*

|                 |                |
|-----------------|----------------|
| Mounting detail | Floor Mounted  |
| Fixing detail   | Mounting Clamp |
| Orientation     | Fixed          |
| IP rating       | IP20           |
| Glow wire test  | 850°           |

|                  |             |
|------------------|-------------|
| Safety class     | III         |
| Insulation class | III         |
| Voltage          | AC230V      |
| Forward voltage  | DC24V       |
| Driver           | CV - Remote |

\*Kindly note that the Photometric & Technical data is obtained after the Svelte Strip is installed into the Trax Profile

## Photometric Graphs

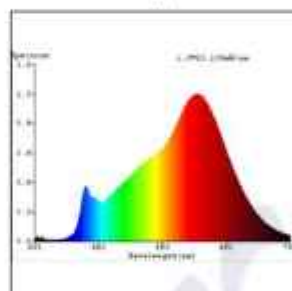
Hue Bin vs Rf Graph



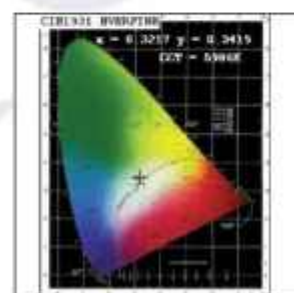
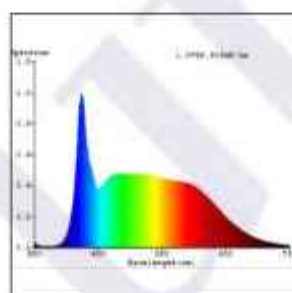
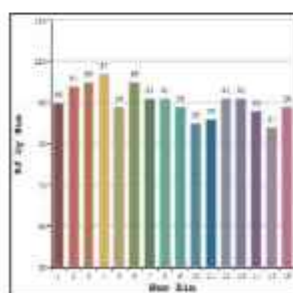
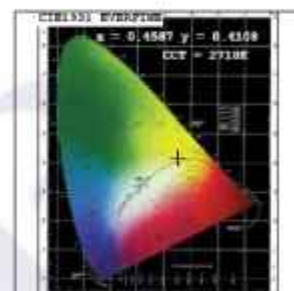
Color Vector Graph



Spectrum vs Wavelength Graph



CIE Chromaticity Graph



## Finish Options

### Body Finish

- ☐ Matt White
- ☒ Custom RAL Color

### Max Length

5000MM

## Dimming Options



Constant Voltage Driver  
75w DC24V  
Non Dimmable



Constant Voltage Driver  
75w DC24V  
Triac Dimmable



Constant Voltage Driver  
75w DC24V  
Analog 0-10V / 1-10V Dimmable



Constant Voltage Driver  
75w DC24V  
Dali Dimmable

L'azure constantly strives to improve our products using the latest technological advancements in the industry.  
Due to which the data mentioned in the data sheet is subject to change without prior notice.